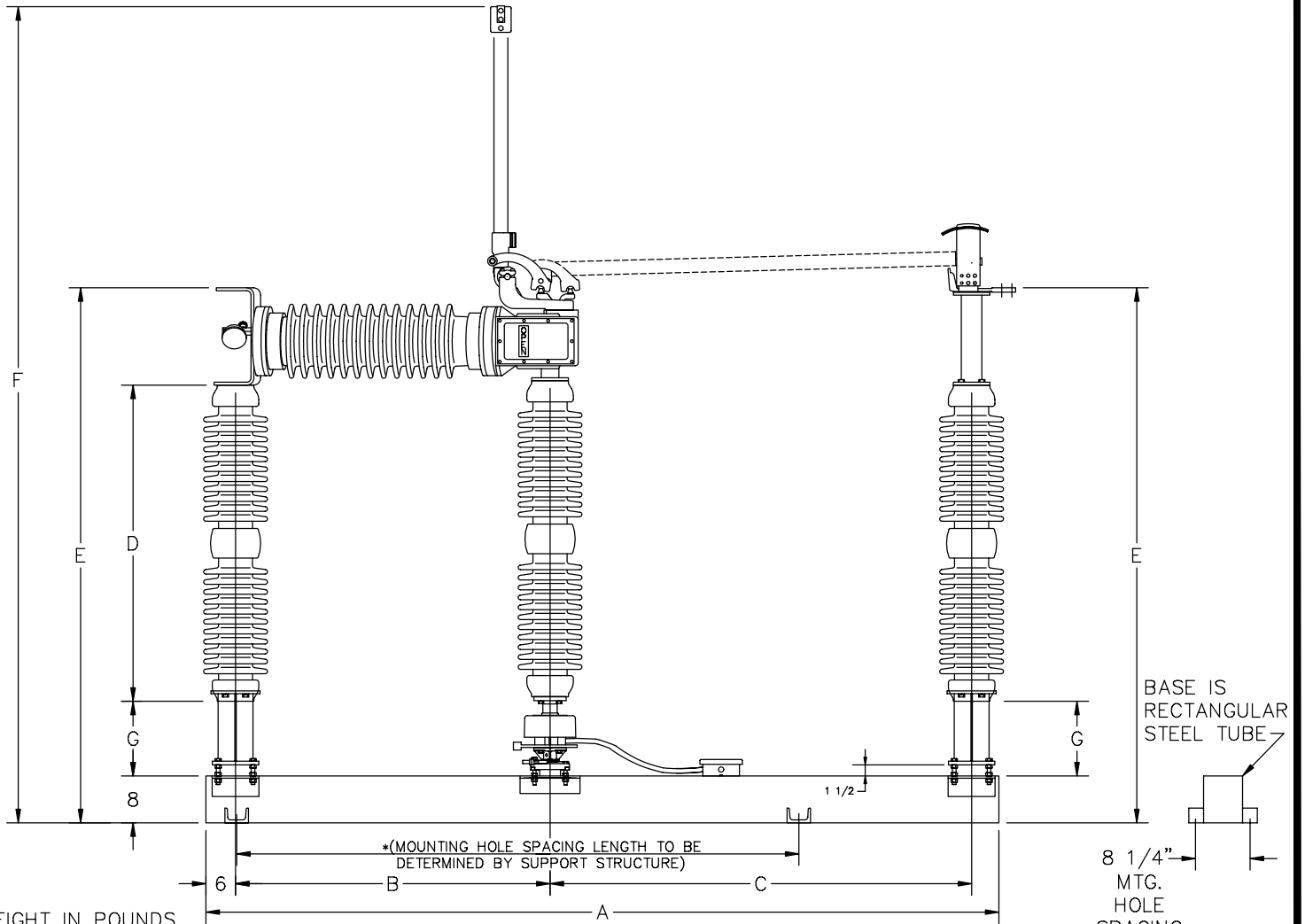
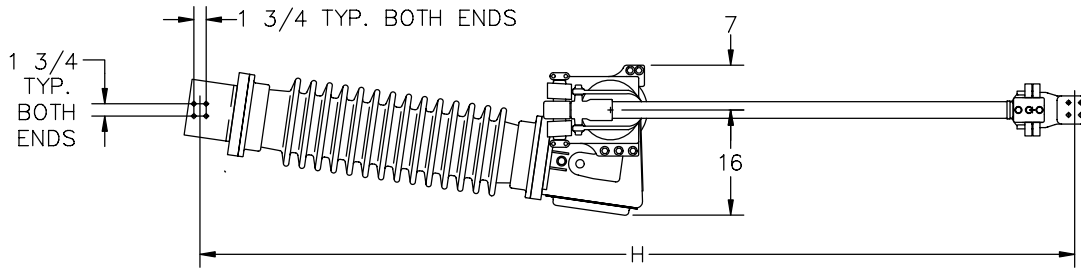


RATINGS AND DIMENSIONS TYPE CSH-B (SSLLC BEARINGS)

REV. 1



WEIGHT IN POUNDS.
DIMENSIONS IN INCHES.

kV	INS. BIL. kV & BLADE BIL. kV	INTER. BIL. kV	INSUL. TYPE	DIMENSIONS IN INCHES (APPROX.)									NET WEIGHT EACH SINGLE POLE UNIT WITH INSUL. (LESS PIPE & CONTROLS)
				A BASE LENGTH	B REAR INSUL. SPACING	C FRONT INSUL. SPACING	D INSUL. HEIGHT	E TERMINAL PAD HEIGHT	F OPEN POSITION HEIGHT	G INSUL. MTG. SPACER	H TERMINAL PAD SPACING		
15.5	110	350	TR-225	87 3/8	58 7/8	18	12	50 7/8	81 1/2	14 1/4	82 1/2	1151	
25.8	150	350	TR-227	90 3/8	57 3/8	21	15	53 7/8	87 1/2	14 1/4	85 1/2	1193	
38.0	200	350	TR-231	96 3/8	57 3/8	27	20	58 7/8	98 1/2	14 1/4	91 1/2	1241	
48.3	250	350	TR-267	102 3/8	57 3/8	33	24	62 7/8	108 1/2	14 1/4	97 1/2	1352	
72.5	350	350	TR-276	114 3/8	57 3/8	45	30	68 7/8	126 1/2	14 1/4	109 1/2	1415	
121	550	550	TR-286	129 3/8	57 3/8	60	45	83 7/8	156 1/2	14 1/4	124 1/2	1705	
145	650	650	TR-288	156 1/2	72 1/2	72	54	92 7/8	177 1/2	14 1/4	151 5/8	1795	
169	750	750	TR-291	168 1/2	72 1/2	84	62	100 7/8	197 1/2	14 1/4	163 5/8	1945	
242	900	900	TR-304	189 1/2	81 1/2	96	80	118 7/8	227 1/4	14 1/4	184 5/8	2700	

TYPICAL WEIGHT OF PIPE & CONTROLS 400 LBS (TOTAL FOR 3 PHASE UNIT). TYPICAL WEIGHT OF MOTOR OPERATOR 250 LBS.