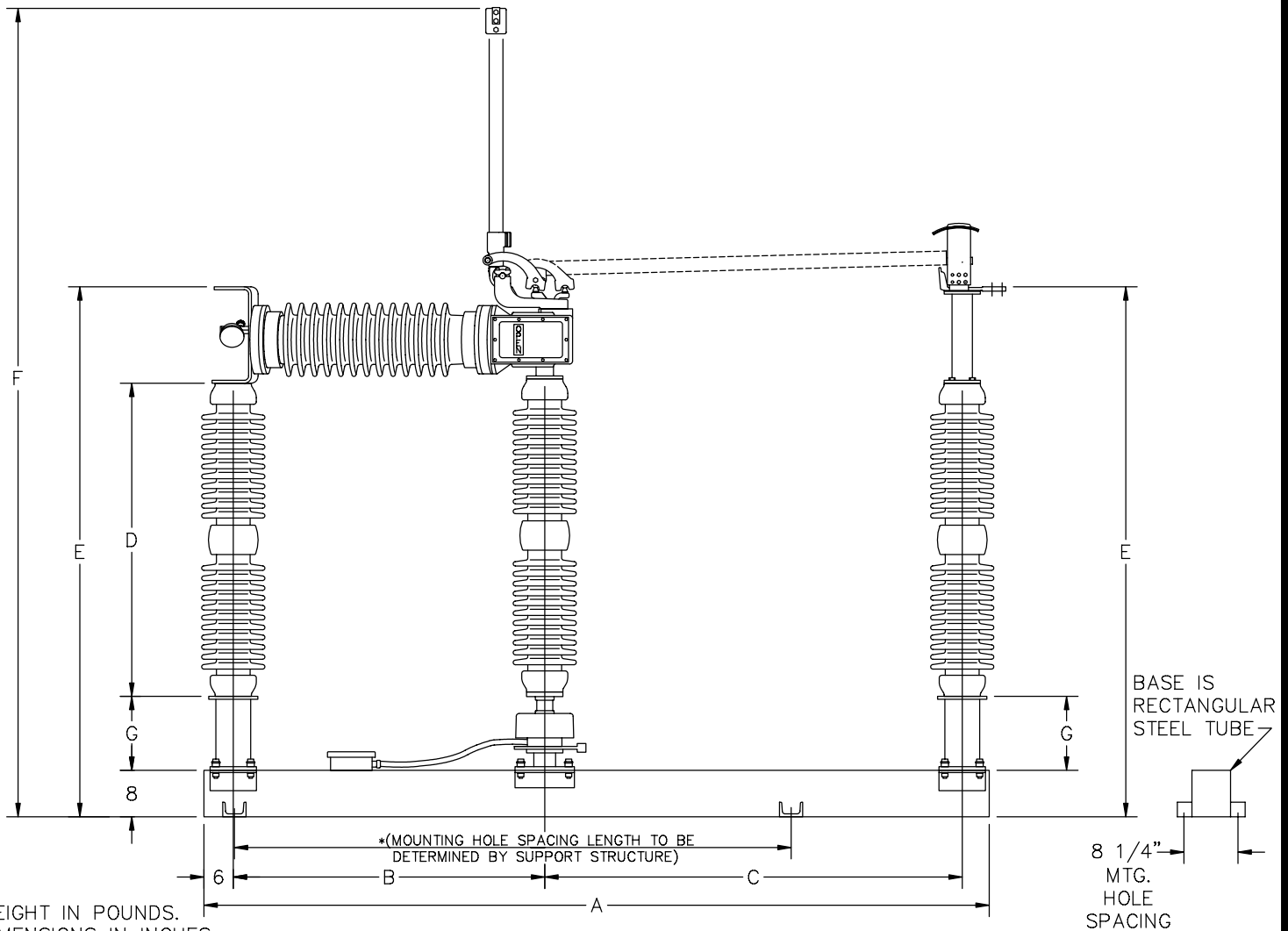
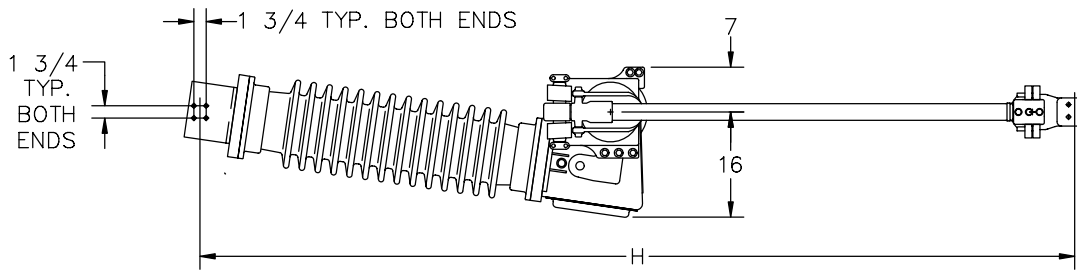


RATINGS AND DIMENSIONS TYPE CSH-8

REV. 1



WEIGHT IN POUNDS.
DIMENSIONS IN INCHES.

kV	INS. BIL. kV & BLADE BIL. kV	INTER. BIL. kV	INSUL. TYPE	CATALOG NUMBER	DIMENSIONS IN INCHES (APPROX.)								NET WEIGHT EACH SINGLE POLE UNIT WITH INSUL. (LESS PIPE & CONTROLS)
					A BASE LENGTH	B REAR INSUL. SPACING	C FRONT INSUL. SPACING	D INSUL. HEIGHT	E TERMINAL PAD HEIGHT	F OPEN POSITION HEIGHT	G INSUL. MTG. SPACER	H TERMINAL PAD SPACING	
15.5	110	350	TR-225		87 3/8	57 3/8	18	12	49 3/8	80	12 3/4	82 1/2	1151
25.8	150	350	TR-227		90 3/8	57 3/8	21	15	52 3/8	86	12 3/4	85 1/2	1193
38.0	200	350	TR-231		96 3/8	57 3/8	27	20	57 3/8	97	12 3/4	91 1/2	1241
48.3	250	350	TR-267		102 3/8	57 3/8	33	24	61 3/8	107	12 3/4	97 1/2	1352
72.5	350	350	TR-276	81030123	114 3/8	57 3/8	45	30	67 3/8	125	12 3/4	109 1/2	1415
121	550	550	TR-286	81040108	129 3/8	57 3/8	60	45	82 3/8	155	12 3/4	124 1/2	1705
145	650	650	TR-288	81040109	156 1/2	72 1/2	72	54	91 3/8	176	12 3/4	151 5/8	1795
169	750	750	TR-291	81040110	168 1/2	72 1/2	84	62	99 3/8	196	12 3/4	163 5/8	1945
242	900	900	TR-304	81040111	189 1/2	81 1/2	96	80	117 3/8	225 3/4	12 3/4	184 5/8	2700

TYPICAL WEIGHT OF PIPE & CONTROLS 400 LBS (TOTAL FOR 3 PHASE UNIT). TYPICAL WEIGHT OF MOTOR OPERATOR 250 LBS.